

Lightweight Welding Cart Catalog # W4011500

Assembly Instructions

General Information

The Thermal Arc Lightweight Welding Cart is designed to easily transport a small-to-medium size power supply, wire feeder, gas bottle*, welding torch and various arc/air accessories. These instructions will guide you through the proper assembly of the cart.

*Maximum 44-in.(112cm) high x 7-in.(18cm) diameter.

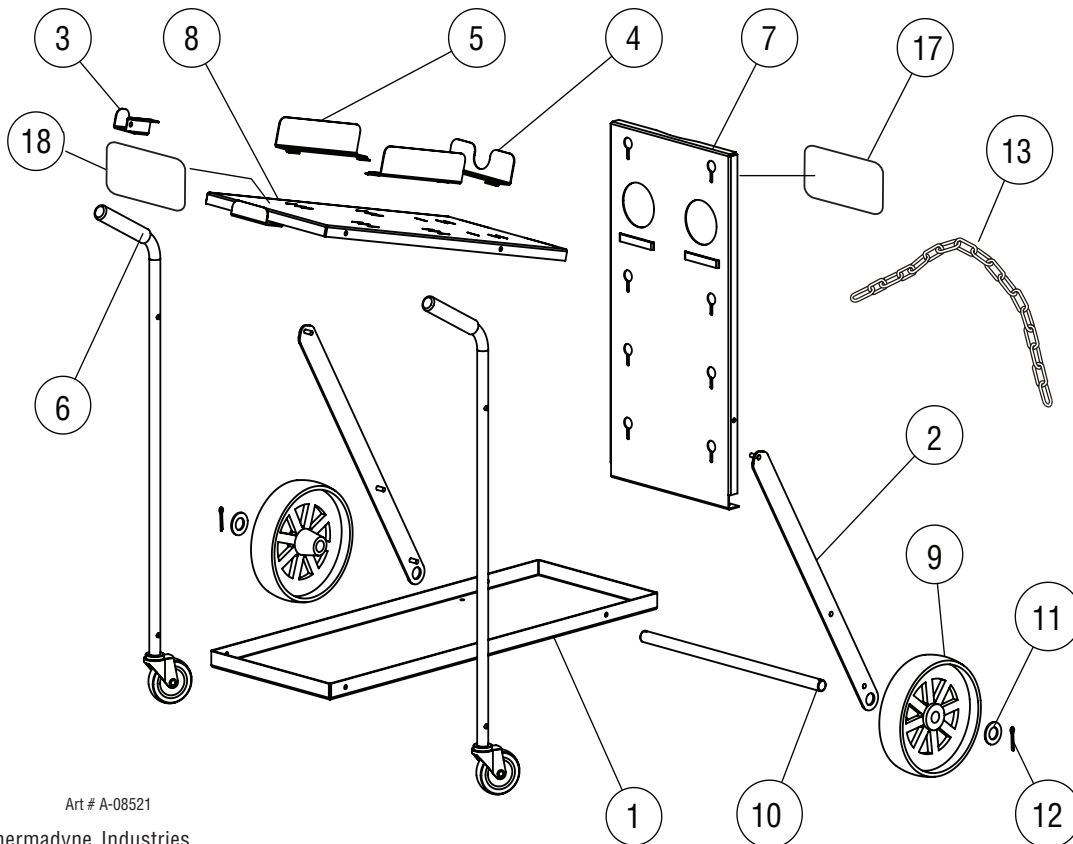
Recommended Tools

- 5mm allen wrench (actual size may vary)
- 10mm wrench (actual size may vary)
- Pliers

Supplied Parts

The following components are included in this kit:

ITEM #	DESCRIPTION	QTY
1	SHELF, LOWER	1
2	BRACE, SUPPORT	2
3	BRACKET, CABLE	1
4	BRACKET, POWER SUPPLY, REAR	1
5	BRACKET, POWER SUPPLY, SIDE	2
6	HANDLE, GRIP AND CASTER	2
7	PANEL, REAR	1
8	SHELF, UPPER	1
9	WHEEL, PLASTIC, 8" OD	2
10	AXLE, CART	1
11	WASHER	2
12	COTTOR PIN	2
13	3mm * 26mm * 700mm CHAIN	1
14	LONG 6mm ALLEN BOLT	4
15	SHORT 6mm ALLEN BOLT	8
16	6mm SELF-LOCKING NUT	12
17	DECAL, MAX BOTTLE SIZE	1
18	DECAL, DO NOT LIFT	1



Art # A-08521

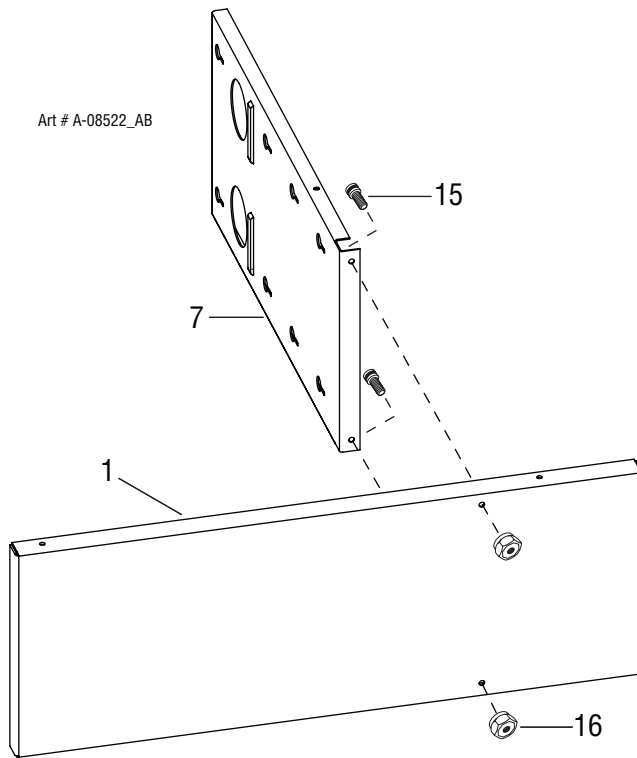
© 2007 by Thermadyne Industries

November 12, 2007

WELDING CART ASSEMBLY INSTRUCTIONS

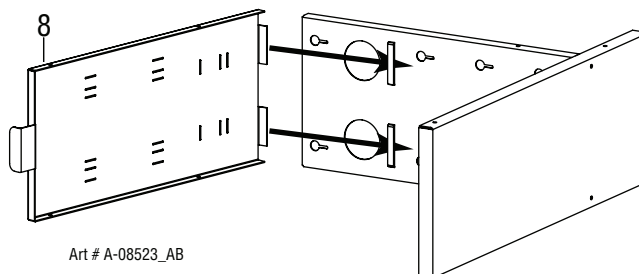
A. Assemble the Base

1. Place the lower shelf (1) on its left side.
2. Position the rear panel (7) inside the lower shelf and line up the holes as shown below.
3. Insert 2 of the 6mm short bolts (15) through the holes. Thread a nut (16) on to each bolt and fasten until finger-tight.



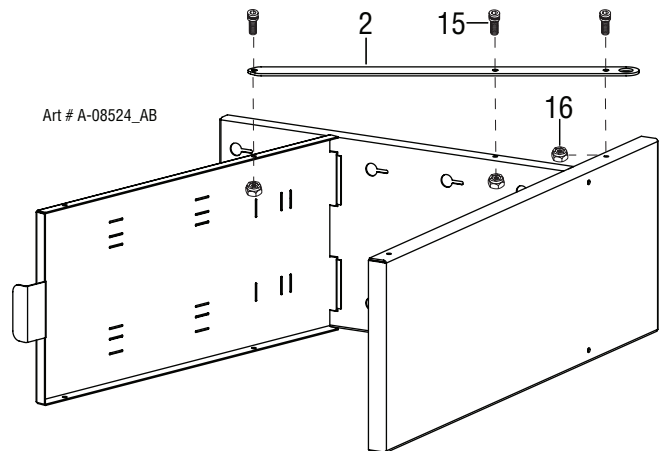
B. Install Upper Shelf

Keep the assembly on its left side and slide the tabs of the upper shelf (8) into the slots of the rear panel as shown.



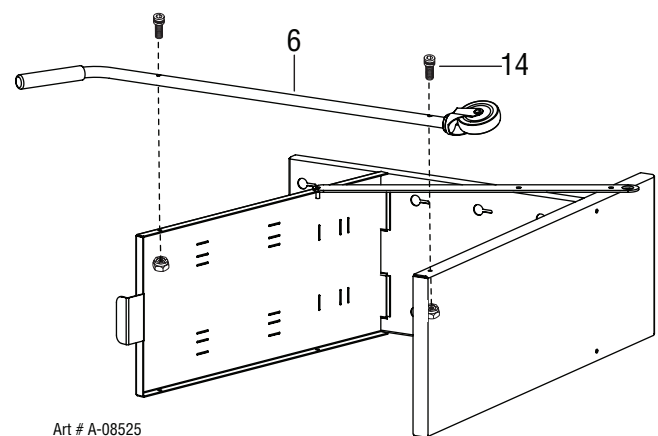
C. Attach Right Side Brace

1. Take one of the side braces (2) and line up its three holes with those in the assembly.
2. Insert a 6mm short bolt (15) through each hole and hand tighten a nut (16) to each.



D. Attach Right Handle-Bar-Caster

1. Attach the right side handle-bar-caster assembly using two 6mm long bolts (14) as shown.
2. Thread a nut (16) on to each bolt and fasten until finger-tight.



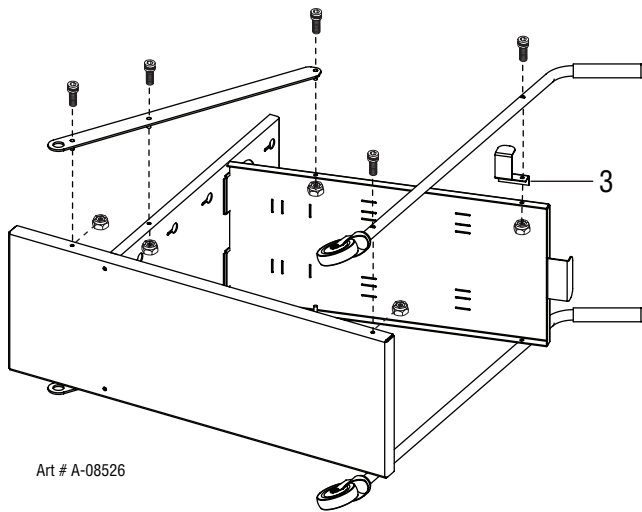
WELDING CART ASSEMBLY INSTRUCTIONS

E. Snug All Hardware

Snug all the fasteners at this time but do not fully tighten. Use a 5mm allen wrench on the bolts and a 10mm wrench on the nuts.

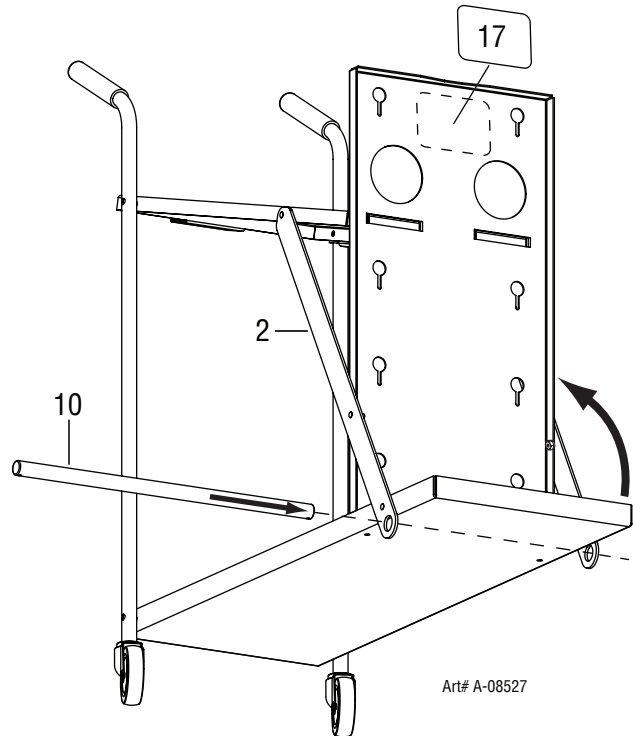
F. Attach Left Side Components

Turn the assembly over on its left side and repeat the procedure in steps C and D but this time include the cable bracket (3) as shown.



H. Insert Axle

1. Insert the axle (10) through the holes in the bottom of the two side braces (2) as shown.
2. Apply "Max Bottle Size" decal (17) as shown.

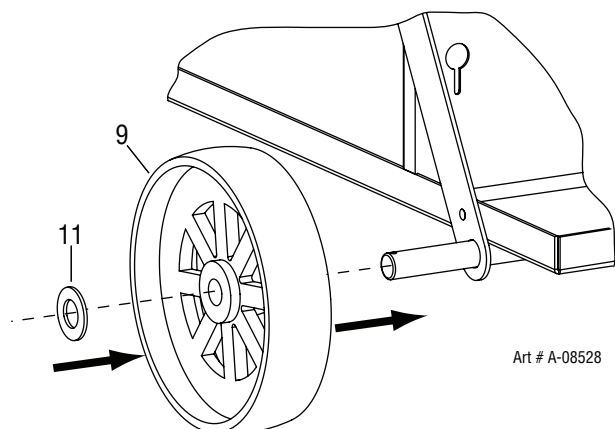


G. Tighten All Hardware

Fully tighten all the fasteners securely at this time but do not overtighten. Use a 5mm allen wrench on the bolts and a 10mm wrench on the nuts.

I. Install Wheels on Axle

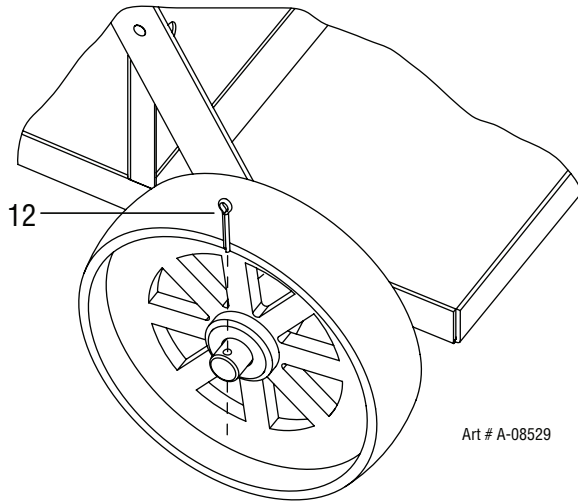
1. Center the axle between the two braces.
2. Slide a wheel (9) over the axle followed by a washer (11).



WELDING CART ASSEMBLY INSTRUCTIONS

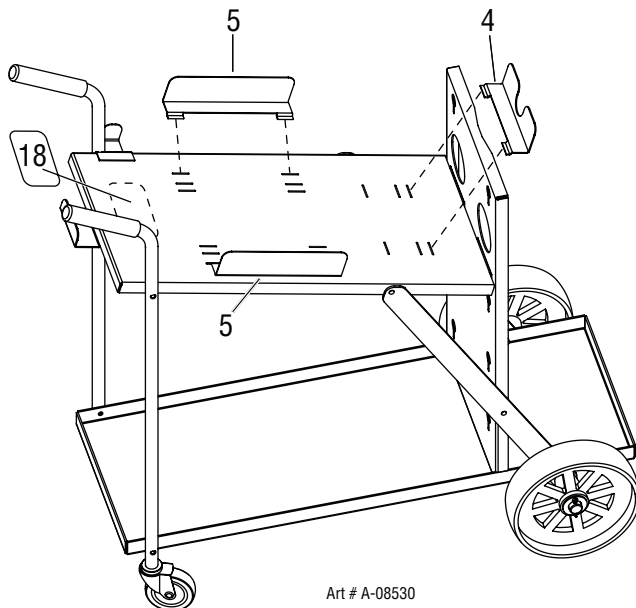
J. Fasten Wheels

1. Insert a cotter pin (12) through the hole in the axle from the top down as shown.
2. Spread the cotter pin apart using a pair of pliers.
3. Repeat steps I and J with the other wheel.



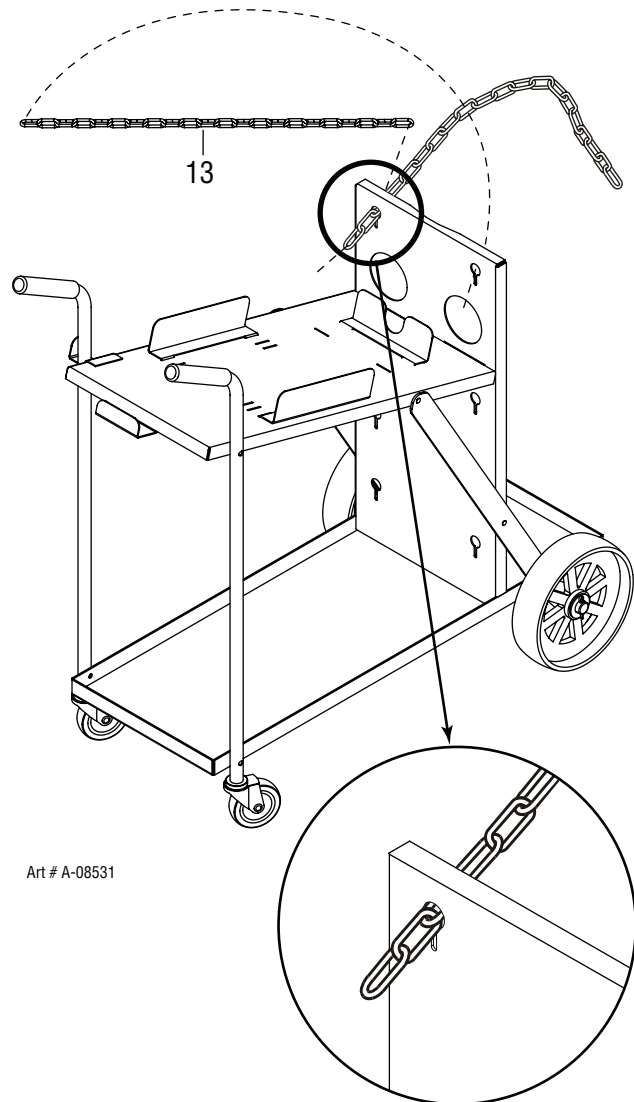
K. Install Brackets

1. Insert the side (5) and rear (4) support brackets into one of the three sets of slots on the top shelf.
2. If necessary, move the brackets into the other slots to adjust how they fit to your power supply or wire feeder.
3. Apply "Do Not Lift" decal (18) as shown.



L. Hang Chain

1. Insert one end of the chain (13) through the appropriate level hole on the left side of the rear panel and secure it by turning and sliding the second link into the slot (top hole is shown).
2. Wrap the chain around the gas bottle and pull the other end through the same level hole on the right side of the rear panel.
3. Pull the chain as tight as it will go and secure it by turning and sliding the closest link into the slot.





GLOBAL CUSTOMER SERVICE CONTACT INFORMATION

Thermadyne USA

2800 Airport Road
Denton, Tx 76207 USA
Telephone: (940) 566-2000
800-426-1888
Fax: 800-535-0557
Email: sales@thermarc.com

Thermadyne Canada

2070 Wyecroft Road
Oakville, Ontario
Canada, L6L5V6
Telephone: (905)-827-1111
Fax: 905-827-3648

Thermadyne Europe

Europe Building
Chorley North Industrial Park
Chorley, Lancashire
England, PR6 7Bx
Telephone: 44-1257-261755
Fax: 44-1257-224800

Thermadyne, China

RM 102A
685 Ding Xi Rd
Chang Ning District
Shanghai, PR, 200052
Telephone: 86-21-69171135
Fax: 86-21-69171139

Thermadyne Asia Sdn Bhd

Lot 151, Jalan Industri 3/5A
Rawang Integrated Industrial Park - Jln Batu Arang
48000 Rawang Selangor Darul Ehsan
West Malaysia
Telephone: 603+ 6092 2988
Fax : 603+ 6092 1085

Cigweld, Australia

71 Gower Street
Preston, Victoria
Australia, 3072
Telephone: 61-3-9474-7400
Fax: 61-3-9474-7510

Thermadyne Italy

OCIM, S.r.L.
Via Benaco, 3
20098 S. Giuliano
Milan, Italy
Tel: (39) 02-98 80320
Fax: (39) 02-98 281773

Thermadyne International

2070 Wyecroft Road
Oakville, Ontario
Canada, L6L5V6
Telephone: (905)-827-9777
Fax: 905-827-9797

World Headquarters

Thermadyne Holdings Corporation
Suite 300, 16052 Swingley Ridge Road
St. Louis, MO 63017

Telephone: (636) 728-3000

FAX: (636) 728-3010

Email: sales@thermalarc.com

www.thermalarc.com

